

SIⁱⁿ - Space Indicator Internal LED

Article number: see below

Picture: UMS, C-channel-mounted with integrated space indicator LED's (actual items may differ from photo)



Description

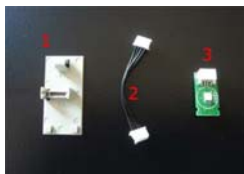
INDECT's Space Indicator shows whether a bay is occupied or free. In addition, the integrated RGB LED allows indication of special bays (e.g. disabled bays, parent with pram, reserved etc.) through freely definable colours. The internal LED is integrated in the UMS sensor.

Advantages

- High-quality and super bright RGB LED
- LED colour can be individually selected and changed at any time to highlight or reserve bays for special user groups (e.g. family - white, disabled - blue, zone parking (cinema, hotel etc.) - pink etc.)
- LED brightness individually adjustable with a mouse click, e.g., adapting it to the ambient light (ceiling light, daylight)
- Compensation of LED deterioration due to long service life and staining
- Daylight compatible LED
- Day/night dimming possible via IVIS user interface
- Rapid installation
- Option: double-sided design




Commercial Data

Article name	Article number	Customs tariff number	Weight per unit
Project Articles			
SIⁱⁿ RGB/SS Set Integrated RGB LED space indicator 115° single-sided (3) incl. cable (2) and LED holder (1) for installation in UMS on site.	100250		0.003 kg (0.007 lbs)



SIⁱⁿ RGB/DS Set Integrated RGB LED space indicator 115° double-sided (3) incl. cable (2) and LED holder (1) for installation in UMS on site.		100251		0.003 kg (0.007 lbs)
---	---	--------	--	-------------------------

Replacement Articles

RGB-LED SS Single-sided RGB LED on PCB with socket		100248		
RGB-LED DS Double-sided RGB LED on PCB with socket		1002481		
Cablⁱⁿ Cable for internal space indicator SI ⁱⁿ ; 50 mm AWG28 4x0.08 mm ² , black, UL1061		10024011		
LED Holder RGB LED holder for integrated space indicator SI ⁱⁿ		10024042		

Technical Data

LED Holder:	Plastic
Light source:	RGB LED, ca. 1,800 to 4,000 mcd
Power consumption:	20 mA [*]
Ambient conditions:	-25 to 60 °C (-13 to 140 °F) 10 to 90% RH (non-condensing)
Storage temperature:	-40 to 70 °C (-40 to 158 °F)
Versions:	<ul style="list-style-type: none"> • Single-sided version • Double-sided version

* Depending on selected colour and brightness. 20 mA valid for green, red or blue colour.

Cabling

- Cablⁱⁿ: AWG28 4x0.08 mm², black, UL1061 (50 mm incl. plugs on either end)

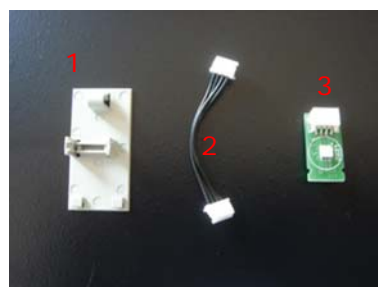
Pictures



Partner Information

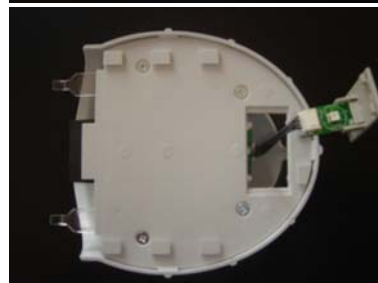
The internal Space Indicator is delivered as shown on the picture right, since it is the installation engineer's decision in which direction the LED must point in case of single-sided LEDs.

Right picture: delivery sample: Space Indicator Internal LED consisting of LED Holder (1), cable (2), RGB LED on PCB with socket (3) (actual items may differ from photo)



Mounting

1. Remove the UMS LED compartment cover: use a very flat small screwdriver to break it out at the edges.
2. Prepare the cable: bend the plug that will be connected to the sensor at 90° to be able to plug in the cable easily in the sensor socket.
3. Plug the cable into the sensor socket, plug the other end into the LED socket, click the LED PCB into the holder.
Note: Make sure that the LED direction is correct when you are using single-sided LEDs. The holder will fit in the sensor only in one way (see picture of step 5).



4. Hide the cable behind the side of the PCB where there is no LED (in case of single-sided LEDs) or laterally (double-sided LED) so it does not cover the LED.
5. Click in the holder. The holder will fit in the sensor only in one way.

**INDECT Electronics & Distribution GmbH**

Rennweg 83
2345 Brunn am Gebirge
AUSTRIA

T: +43/2236/32 01 99
F: +43/2236/32 01 99-99
office@indect.com
www.indect.com



All rights reserved.

No part of this document may be reproduced, stored in a retrieval system, or transmitted in any form or by any means, electronic, mechanical, photocopying, microfilming, or otherwise, without written permission from Indect Electronics & Distribution GmbH.

Indect Electronics & Distribution GmbH assumes no liability whatsoever for the contents of this document. Indect Electronics & Distribution GmbH reserves the right to change the contents of this document, in its own estimation and without notice. This document is delivered in an "as is" state, and Indect Electronics & Distribution GmbH assumes no liability for its use.